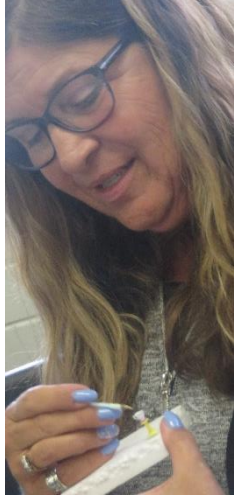


Tea Tray Part II, continued



Far left: Theresa adding gold to her tea pot lid.
Left: Brenda painting her tea cup.



For ease in painting clear coats of nail polish, use Tacky on top of a push pin to hold the pieces in place. Put a second coat onto the tea pot plus handles of tray. This will make more realistic-looking like china.



Cut a 1/3rd piece out of the small hole punch and wrap the remaining 2/3rds piece around the spout.

Thanks to Theresa for letting me photograph her project in progress for Bunny's instructions in the Newsletter.



Assemble tiered tray by putting round gold bead onto eye pin, then clear bugle bead, followed by little bowl with hole, then gold sequin (curve-side up to stabilize bowl), then bugle bead, flat white sequin, then plate, another sequin curve-side up. If everything is correct, turn upside down and leaving a little space on the eye pin, put on some glue, slide up next piece and continue gluing in this fashion until all is glued in place. Crazy or Airplane glue works best. Wendy's sample far right.



Once all glued, cut eye pin. Do another coat of clear nail polish, and finally add the little black square piece at the bottom, to raise the tray.